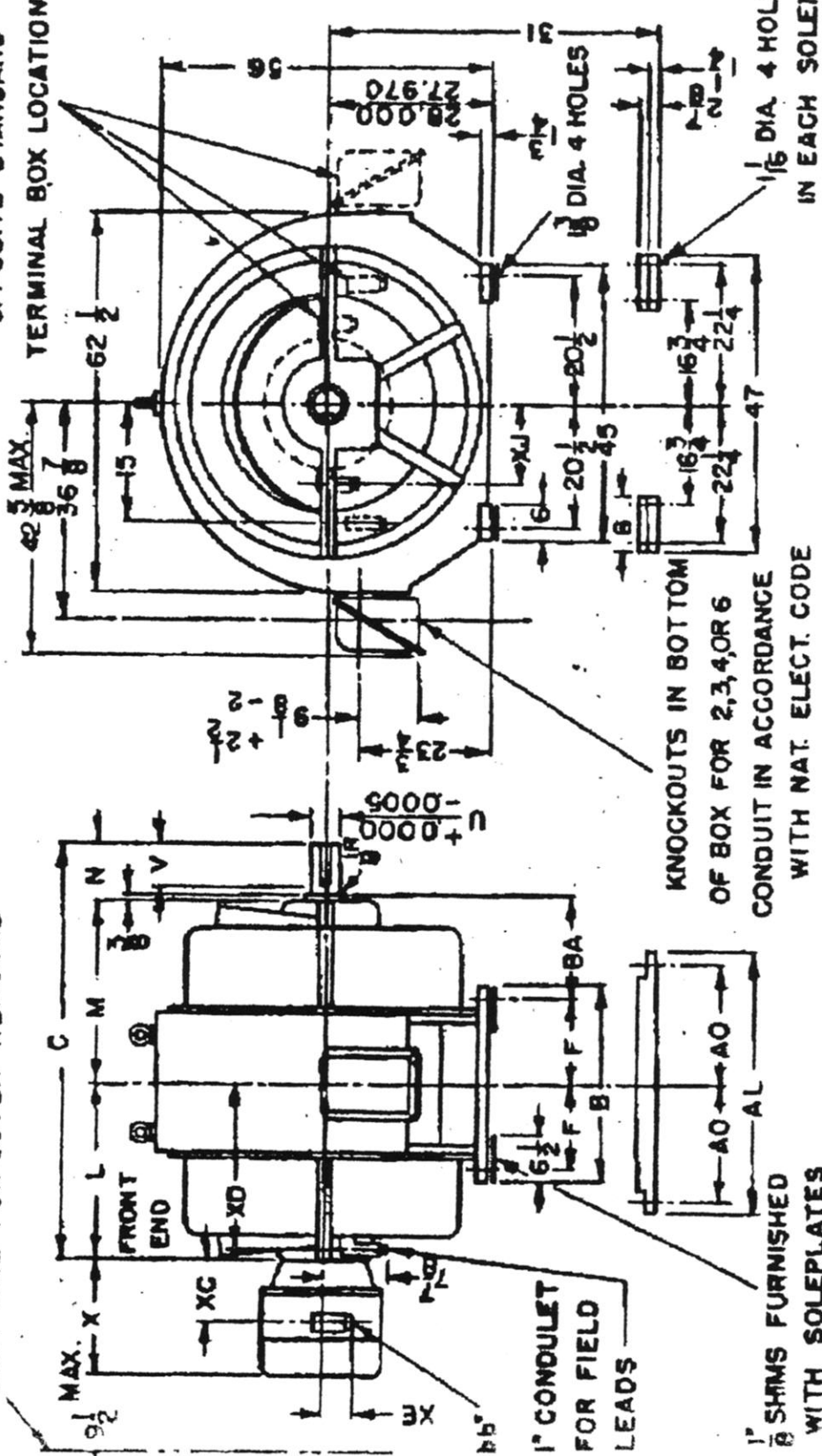


LIMIT LINE FOR COVER REMOVAL

OPPOSITE STANDARD
TERMINAL BOX LOCATION



STANDARD ROTATION IS COUNTER-CLOCKWISE FACING END OPPOSITE SHAFT EXTENSION (FRONT END).
 TERMINAL BOX MAY BE REVOLVED TO ANY 90° POSITION. WHEN NOT PROVIDED, THE 10 INCH
 ARMATURE LEADS ARE IN POSITION SHOWN.

DOTTED LINES ON END BELLS SHOW DRIPPROOF CONSTRUCTION.