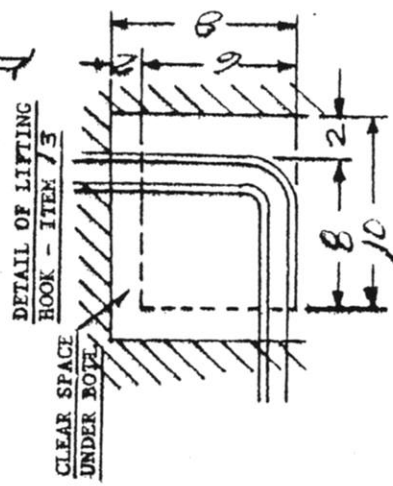
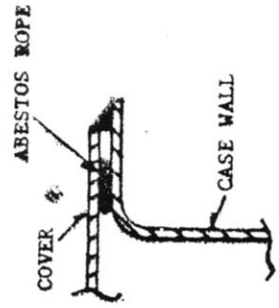
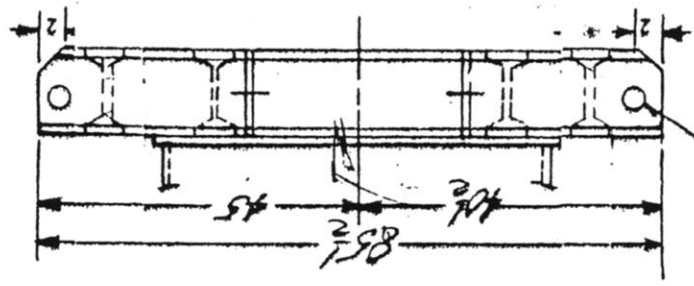
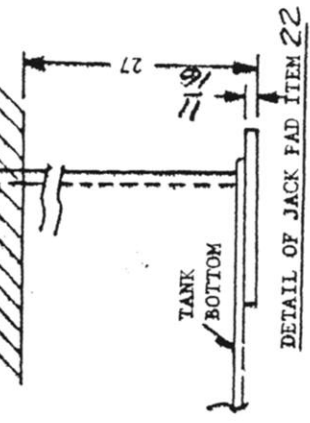


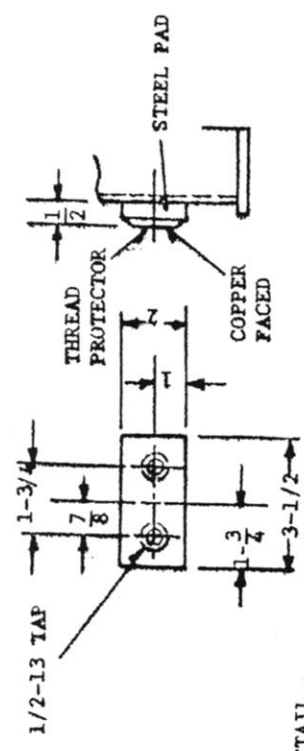
DETAIL OF TURNED OVER FLANGE WITH WELDED ON COVER - ITEM 14



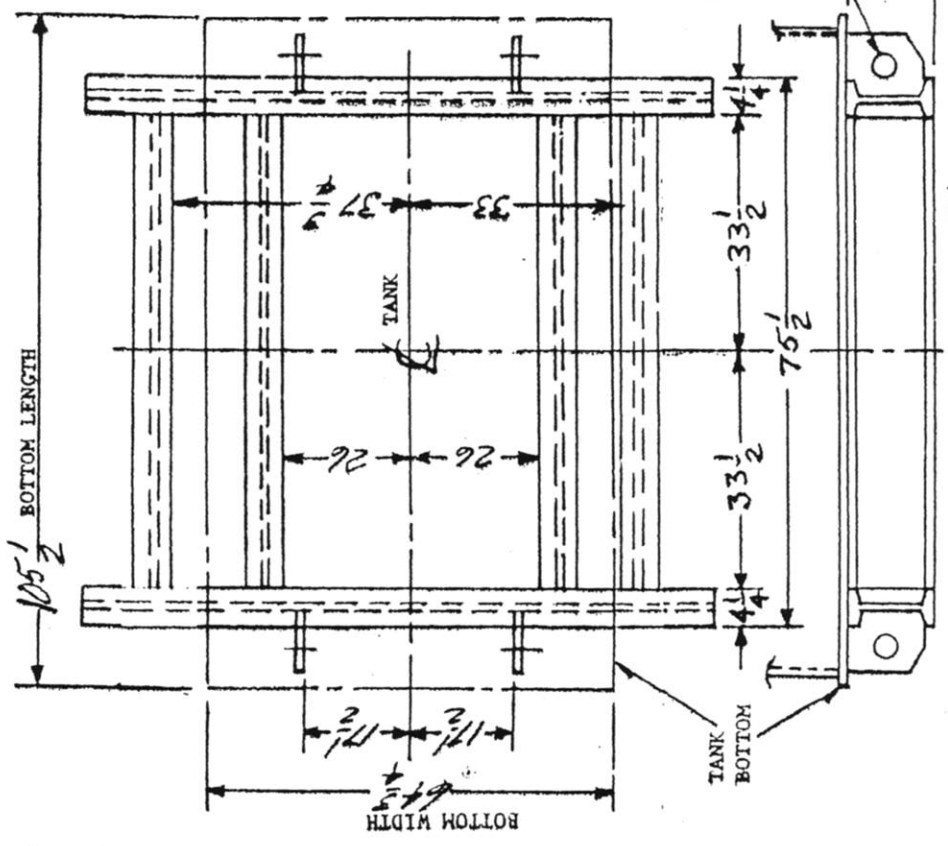
THIS DIM. IS CLEAR IN FRONT OF JACK PAD TO 27" DIM.



3" DIAMETER HOLES FOR PULLING - 8 TOTAL



DETAIL... GROUND PAD ITEM 16



DETAIL OF BASE-ITEM 21